

HOLISTIC

AUTHENTIC

PURPOSE DRIVEN

ENTREPRENEURIAL

GLOBAL

---

# The FFLA Campus

A VIRTUAL TOUR

2023 / 2024

Element X for Charter Application

---



---

Footprints for Learning Academy  
#102-2926 Kingsview Blvd. SE Airdrie, Alberta (ph: 587 775 9303)

---





---

# Upon Looking at the Online Spaces

---

- ❖ You will see that all Kindergarten through Grade 12 classes and subjects have Google Classrooms or MOODLE that run parallel to our traditional in-class learning. These are for students and parents to access the learning materials, to schedule the learning, and to chat with the teacher.
- ❖ You will see that we communicate with our Parent Community regularly through our FFLA website, our Facebook page, our newsletters, our Google classes, and our reporting system ALMA.





# Footprints for L

*Purpose-driven K-12 le*  
global and entre

## Footprints for Learning Academy

522 likes • 601 followers

Connect with Footprints for Learning Academy on Fa

Log In

or

Create new account



Home About Admissions Core Programs Athletics Family Portal Donate Contact

BOOK A TOUR

# Footprints for Learning

*Purpose-driven K-12 learning through a  
global and entrepreneurial focus.*



Home About Admissions Core Programs Athletics Family Portal Donate Contact

BOOK A

## OUR CORE PROGRAMS

Integrating Entrepreneurship & Global  
Perspectives into all Curricular Subjects

The curriculum follows the Alberta Education Program of Studies for k-12 Math, Literacy, Science, Social and other required curriculum, while integrating entrepreneurship and a global mindset into all these subjects. This holistic approach prepares students for the modern world, equipping them with essential skills and perspectives.

Just like mathematics and science, students develop critical and creative thinking skills, solving real-world problems and fostering innovation. History and social sciences explore the interconnectedness of societies, promoting understanding and appreciation of diverse perspectives.





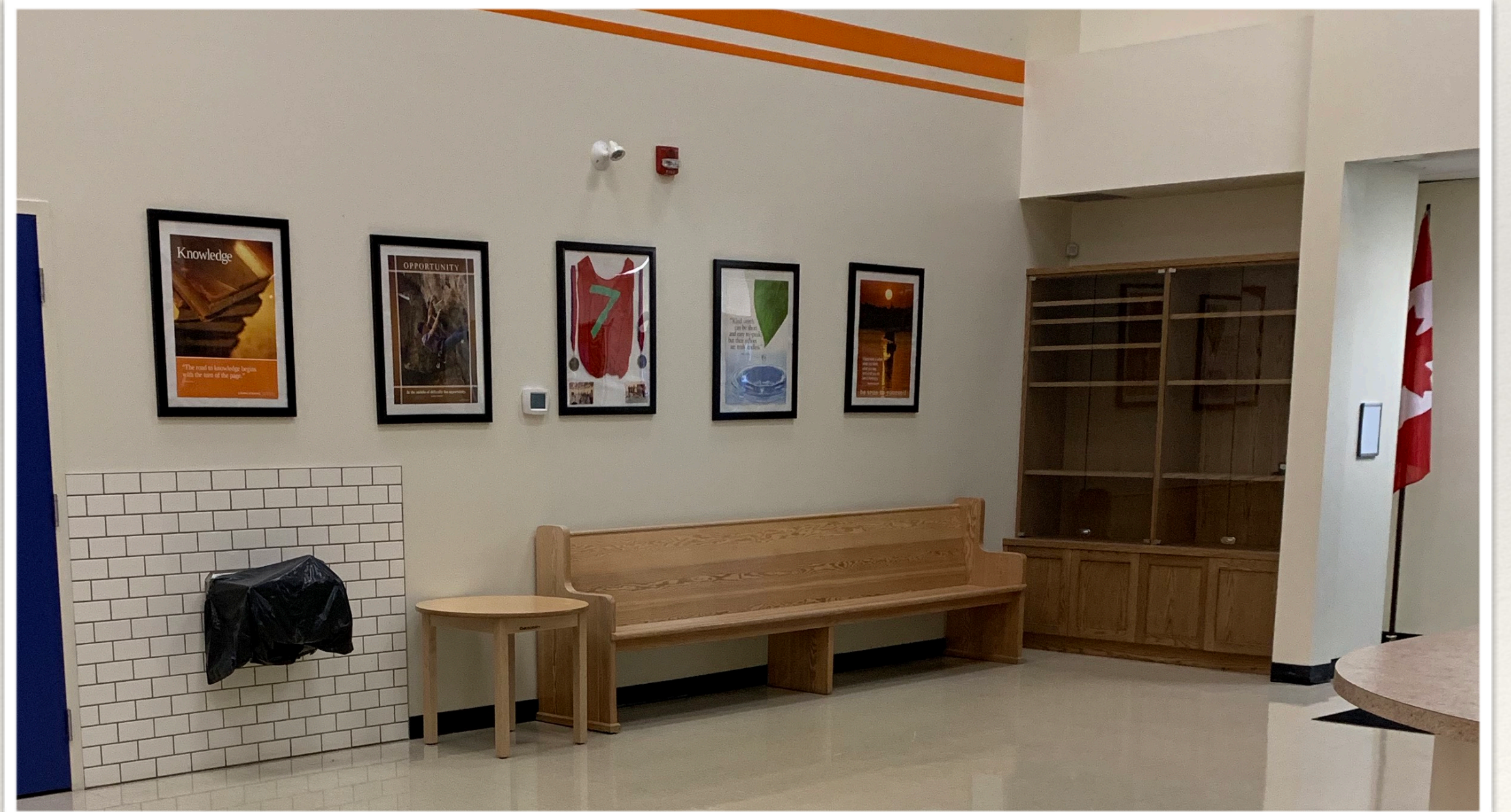
---

# Upon Entering the FFLA Facility

---

- ❖ You will be greeted by our office staff and administration. We are here to welcome all, facilitate processes, and solve problems as they may arise.
- ❖ You will see our large gym with a curtain that allows for class flexibility. We also have the availability of another small gym. In addition, we have indoor and outdoor play equipment areas.
- ❖ You will see that the main floor houses the Kinder, Grade 1, Grade 2, and Grade 3 in separate niches, while the upstairs houses our Grade 4 and 5 in one corridor, our 6 through 9 in another hall, and then our Grade 10 through 12 in a learning commons.







*EXPLORE ACHIEVE EXCEL*

---

# KINDER EAST

---

There are two 2.5 day programs hosted at this Kingsview Blvd. location. The programs, staffing, and values are consistent for all FFLA classrooms, noting that the essence of the ECS programming is based on a balance between Literacy and Numeracy preparation for Grade 1 and exploration through Art, Social Studies, Music, Spanish, and Entrepreneurial and Global Awareness lesson time.





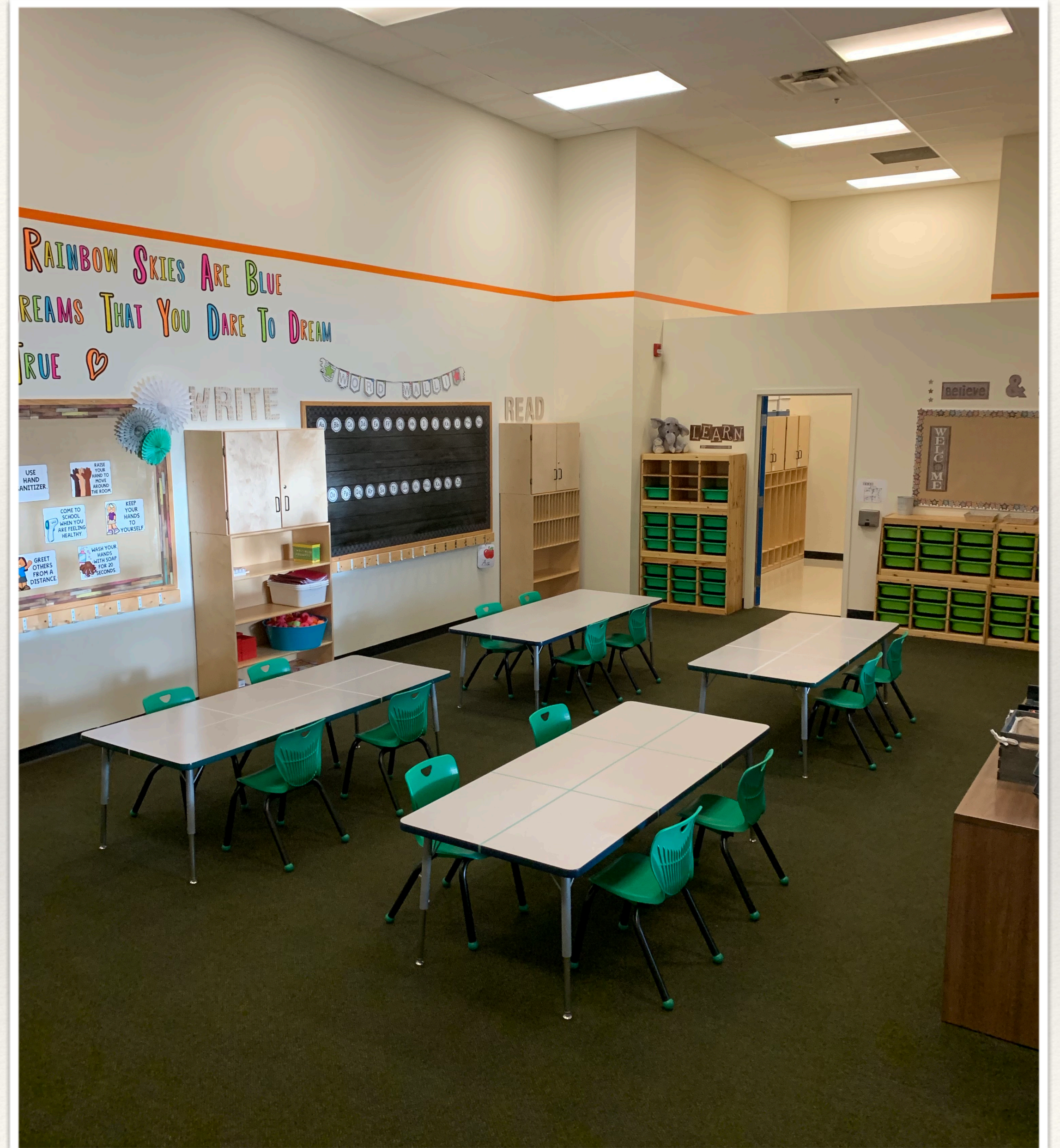
*EXPLORE ACHIEVE EXCEL*

---

# GRADE 1

---

This program focuses very much on the foundation of Literacy as the cornerstone to all other Grade 1 curricula and future success in the upper grade studies. The scaffolded program is highly structured and tests all students regularly to track individual progress for differentiation. Our Math program also allows for differentiation with with manipulatives. We complement these foundations with Art, Music, Spanish, Science, Physical Education, and Social Studies - with target and embedded elements of Entrepreneurship and Global Awareness.





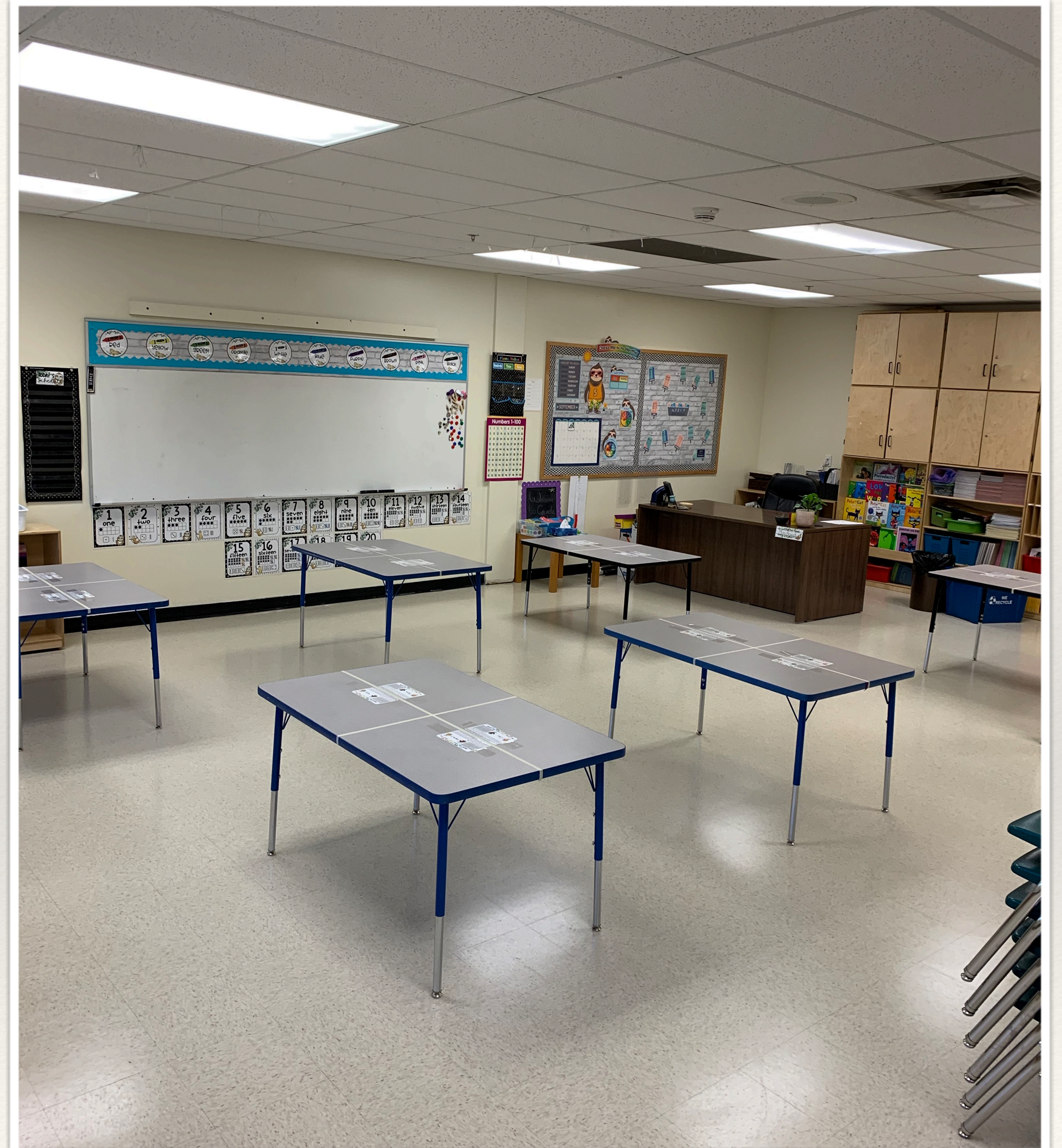
*EXPLORE ACHIEVE EXCEL*

---

# GRADE 2

---

We continue with the Literacy work of Grade 1 and apply it to early class novels, to mastery in our Math problem-solving, to the exploration of country and its citizenship in Social Studies, to an experimentation focus in Science - throughout we embed and target Entrepreneurship and Global Studies. Spanish remains important as a core subject, with Music, Art, and Physical Education time for creative, physical, and constructive learning.





*EXPLORE ACHIEVE EXCEL*

---

# GRADE 3

---

This year is one of transitions as the Literacy levels of the students advance. Novel studies and reading as part of the learning in Math, Social Studies, and Science becomes even more important. We maintain a challenge or inquiry based design for project work, and again, we offer Music, Art, Physical Education, and Spanish to give a range of opportunities for these young learners that is infused with Digital Literacy, Entrepreneurship, and Global Awareness.





*EXPLORE ACHIEVE EXCEL*

---

## GRADE 4

---

Grade 4 is a time where the structures established in Kinder through Grade 3 gain a pace in the learning programs. Numeracy focuses on advancing concepts in the mechanics of fractions within the project-based learning. In Social Studies we present a travel itinerary for Alberta, while Science looks at the mechanics of movement. Literacy remains an important and highly structured core, with Spanish, Music, Art, Physical Education, and now French as the complements. FFLA again devotes targeted and embedded time to both Entrepreneurship and Global Awareness.





*EXPLORE ACHIEVE EXCEL*

---

## GRADE 5

---

Grade 5 is that first step into middle school where your homeroom teacher shares the programming with other specialists. The structured Literacy resources and lessons continue, as does the spiral of Math concept learning with a mix of the mechanics with the problem-solving. The explorations of Social and Science, and the fun of Spanish, French, Art, Music, and Physical Education all add dimension to the Grade 5 day. Each week gives evidence to project-based learning and digital literacy applications with weekly classes focused on Entrepreneurship and Global Awareness.





*EXPLORE ACHIEVE EXCEL*

---

# GRADE 6

---

The rigour of learning advances with the studies of Grade 6. This is where the baseline learning expands and prepares the students for junior high. Literacy is seen in all core subjects (English, Math, Social, and Science) with digital literacy in Google Classrooms as its partner for learning organization. Spanish as a core continues with French as its complement. Electives, Entrepreneurship, Global Awareness and Physical Education are also given a focus with time in the student schedules.





*EXPLORE ACHIEVE EXCEL*

---

## GRADE 7

---

Grade 7 is enveloped into a philosophy of middle/junior high school programming for continuity from grades 5 through 8. More so, it is given an academic focus with a continuation of all core subjects and programming pieces gathered from the students' previous years. The Literacy examines genres of literature, the Math examines algebra, the Social Studies examines citizenship, and the Science looks at the life around us. Spanish continues with Entrepreneurship and Global Awareness become an academic partner to the cores. Physical Education and Electives round off the experiential learning.





*EXPLORE ACHIEVE EXCEL*

---

## GRADE 8

---

Grade 8 is a year where two forces are used to push and pull the learning moments. The push is the momentum gained from the previous years and their focus on differentiated or mastery learning in Numeracy and Literacy. The pull is the direction movement towards the knowledge and skills needed for high school in Grade 9. ELA, SS, Science, Math, and Spanish remain the core subjects, with complementary courses in Entrepreneurship, Global Awareness, Physical Education, and Electives. Entrepreneurship, FNMI, and UDL are embedded into all learning.





*EXPLORE ACHIEVE EXCEL*

---

## GRADE 9

---

Grade 9 is that first year of high school with a continuation of traditional classes the Google Classroom. It is a time where the work and play of learning find a balance for academic success and social growth. The cohort with FFLA offers differentiated and personalized review of the fundamentals for the core subjects of ELA, Math, SS, and Science while continuing to academically explore Spanish, Entrepreneurship, and Global Awareness. Physical Education and Electives complete the learning schedule. opportunities. Entrepreneurship, FNMI, and UDL are embedded into all learning programs.





*EXPLORE ACHIEVE EXCEL*

---

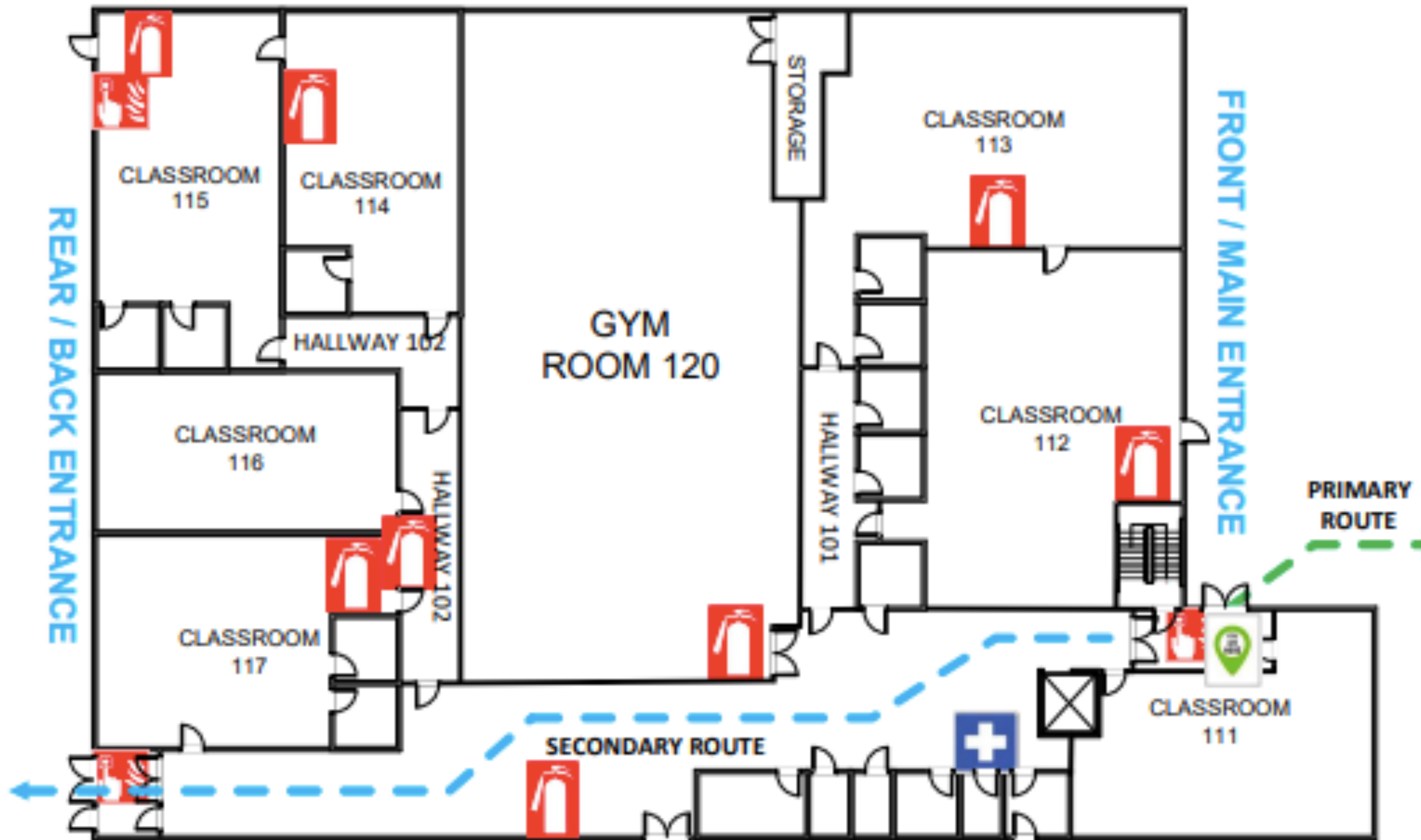
## GRADE 10 and beyond

---

Grade 10, 11, and 12 is a blended learning program wherein the access to the learning platform can be online AND in-class. Tutorials are provided to give students key lessons or lectures on the learning content, while the MOODLE provides the ability to pace one's own learning anywhere and anytime. The student schedules are in two semesters and address the core subjects of ELA, Social Studies, Science, and Mathematics. Spanish, CALM, Art, French, and CTS modules are also offered. The cohort is small with a mixed-grade configuration. Entrepreneurship studies (as a packaged set of CTS Modules) is a central focus each year.







-FFLA MAIN FLOOR MAP





- FFLA SECOND FLOOR MAP



**“ Motto: Explore Achieve Excel**

**EXPLORE Entrepreneurship ACHIEVE in Core Learning  
EXCEL in Defining your Educational Journey ”**

*–FFLA Administration*





# FOOTPRINTS FOR LEARNING ACADEMY

YOU ARE INVITED!

PLEASE VISIT SOON AND WE WILL  
GIVE YOU A TOUR!

